



Rhode Island

TRUCKING FAST FACTS



TRUCKING DRIVES THE ECONOMY

CAREERS

17,720

Trucking industry jobs
in Rhode Island (2018)



That's **1 in 24** jobs in the state

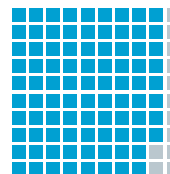


SMALL BUSINESS EMPHASIS



Trucking companies located in Rhode Island (2019). Primarily small, locally owned businesses, these companies are served by a wide range of supporting businesses.

TRANSPORTING THE ESSENTIALS



87.7%

of Rhode Island communities depend exclusively on trucks to move their goods.



Percent of manufactured tonnage transported by trucks in the state. **That's 66,150 tons per day.** (2012)

COMPETITIVE WAGES

- Total trucking industry wages paid in Rhode Island in 2018 exceeded **\$1 billion**, with an average annual trucking industry salary of **\$57,578**.
- Heavy and tractor-trailer truck drivers held **3,200** jobs with an average annual salary of **\$48,360** (U.S. Bureau of Labor Statistics, 2018).

SAFETY MATTERS

SAFETY FIRST

Rhode Island Trucking Association members put safety first through:

- Improved driver training
- Investment in advanced safety technologies
- Active participation in industry safety initiatives at the local, state and national levels

CONTINUALLY IMPROVING

2017 fatal crash rate per 100 million Vehicle Miles Traveled (VMT):

RI **1.36**

USA **1.42**

69% The amount by which the U.S. large truck fatal crash rate has dropped between 1975 and 2017.

COMMITMENT TO SHARING THE ROAD



The Share the Road program sends a team of professional truck drivers to communities around the country to teach car drivers about truck blind spots, stopping distances and how to merge safely around large trucks, all designed to reduce the number of car-truck accidents.



Updated April 2020 with most recent data available.



@RITrucking



www.ritrucking.org



Rhode Island

TRUCKING FAST FACTS



\$ TRUCKING PAYS THE FREIGHT

THE INDUSTRY

\$67 million

Amount the trucking industry in Rhode Island paid approximately in federal and state roadway taxes (2018).

The industry paid **27%** of all taxes owed by Rhode Island motorists ...



... despite trucks representing only **6%** of vehicle miles traveled in the state.



INDIVIDUAL COMPANIES

As of January 2020, a typical five-axle tractor-semitrailer combination paid:

\$6,496 + **\$8,906**
state highway user fees and taxes federal highway user fees and taxes

These taxes were over and above the typical taxes paid by businesses in Rhode Island.



ROADWAY USE

Miles of public roads in Rhode Island (2018). **6,013**

Miles driven on public roads:

All Motorists: 8.0 billion



Trucks: 500 million

TRUCKS DELIVER A CLEANER TOMORROW

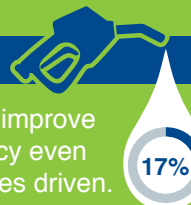
EMISSIONS

- ✓ **43%** of U.S. commercial trucks are now powered by the newest-generation, near-zero emissions diesel technology.
- ✓ Medium- and heavy-duty trucks contribute just **23%** of all transportation-related greenhouse gas (GHG) emissions in the U.S. and represent only **6%** of total U.S. GHG emissions.

FUEL CONSUMPTION

The trucking industry continues to improve energy and environmental efficiency even while increasing the number of miles driven. In 2018:

- Combination trucks accounted for just **17%** of the total highway transportation fuel consumed
- Combination trucks consumed nearly **100 billion** fewer gallons of fuel than passenger vehicles in the U.S.



PARTNERSHIPS



Through the **U.S. Environmental Protection Agency's (EPA) SmartWay Transport Partnership**, the trucking industry is working with government and businesses to quantify greenhouse gas emissions and take steps to reduce them.